



## COMPOUNDS & POLISHING PADS

 **DITEC**<sup>®</sup>  
MARINE PRODUCTS

[ditecmarineproducts.com](http://ditecmarineproducts.com)

## Fine Cut Polish Compound

Fine Cut hologram remover that leaves a deep-gloss finish. Very well suited for dual action polishers.

### DESCRIPTION:

Anti-hologram polish to effectively remove holograms. Intelligent, self-grinding alumina abrasive grains of the latest generation guarantee a 100% hologram-free paint surface. Free of solvents and silicone – purely water-based. Can be used on ALL (including scratch-resistant) fresh and cured paints.

### PRODUCT SPECIFICATION:

Appearance: Cream/Paste

Odor: Odorless

Solubility: N/A

pH: 8

### SIZES:

250 ml, Quart (32 oz)



### APPLICATION DIRECTIONS:

**For the DITEC Fine Cut Compound, we recommend using the red trapez foam polishing pad.**

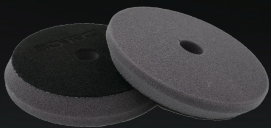
1. Apply a sufficient amount of the polishing compound to the polishing pad or to the painted surface.
2. Spread the compound at a low speed (about 1000 rpm) on the defect and at about 1600 rpm using moderate pressure.

### RECOMMENDED PADS FOR USE WITH FINE CUT COMPOUND:



#### **Red Trapez Foam Pad (150 mm, 175 mm):**

Made for low cutting/high gloss effect. Suitable for finishing and fine cut correction of all modern paint types.



#### **Gray Trapez Foam Pad (150 mm, 175 mm):**

Made for minimal cutting/super high gloss effect. Suitable for finishing and hologram removal on all modern paint types and gelcoat. Especially suitable for softer and darker paints.

# Medium Cut Polish Compound

One-step Medium Cut Compound. Leaves a high gloss and hologram-free surface. Works well with both rotating and dual action polishers.

## DESCRIPTION:

One-step sanding/high gloss polish to remove fine scratches and marks from P3000 grit in one operation. Hologram free! The unique abrasive grain contained in the fine abrasive paste grinds continuously while finely polishing to achieve a perfect painted surface. Silicone and solvent-free. DiTEC Medium Cut is fully suitable for all commercially-available paint systems, including scratch-resistant paints.

## PRODUCT SPECIFICATION:

Appearance: Cream  
Odor: Odorless  
Solubility: N/A  
pH: 8

## SIZES:

250 ml, Quart (32 oz)

## APPLICATION DIRECTIONS:

**For the DiTEC Medium Cut Compound, we recommend using the orange trapez foam polishing pad.**

1. Apply a sufficient amount of the polishing compound to the polishing pad or to the painted surface.
2. Spread the compound at a low speed (about 1000 rpm) on the defect and at about 1600 rpm using moderate pressure.

## RECOMMENDED PADS FOR USE WITH MEDIUM CUT COMPOUND:



### **Orange Trapez Foam Pad (150 mm, 175 mm):**

Made for medium cutting/high gloss effect. Suitable for both finishing and moderate cut correction of all modern paint types and gelcoat. Usable for one-step correction, and very good for finishing work after heavier corrections.



# Heavy Cut Polish Compound

Coarse-grained, modern grinding polish for polishing of heavily-weathered paints. Works well with both rotating and dual action polishers.

## DESCRIPTION:

Due to the amount and the very homogenous abrasive grain, this sanding polish ensures a fast and high sanding performance for the reliable removal of scratches and sanding marks from a grain size of P1500. Can be used on ALL (including scratch-resistant) fresh and cured paints. Silicone and solvent-free.

## PRODUCT SPECIFICATION:

Appearance: Liquid Cream  
Odor: Odorless  
Solubility: N/A  
pH: N/A

## SIZES:

250 ml, Quart (32 oz)



## APPLICATION DIRECTIONS:

**For the DiTEC Heavy Cut Compound, we recommend using the yellow trapez foam polishing pad.**

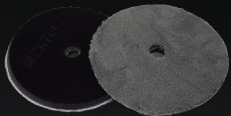
1. Apply a sufficient amount of the polishing compound to the polishing pad or to the painted surface.
2. Spread evenly over the defect at a low speed (approx. 1000 rpm), speed to approx. 1800 rpm. Increase and polish off the flaw using light pressure.

## RECOMMENDED PADS FOR USE WITH HEAVY CUT COMPOUND:



### **Yellow Trapez Foam Pad (150 mm, 175 mm):**

Made for high cut/high gloss effect. Suitable for moderate-to-high cut correction of all modern paint types and gelcoats. Mostly used for correction of medium hard paint.



**Gray Microfiber Pad (165 mm):** Made for use on paint with heavy oxidation or scratches.



**White Microfiber Pad (155 mm):** Made for use on paint with even heavier oxidation or scratches.